

ADVANTAGES OF IMPACT ENERGY ANALYZER

APPLICATION : The IEA(Impact Energy Analyzer) is designed and built not only for monitoring impact energy efficiency and also determining the stroke height to obtain sufficient energy into certain type of soil conditions conducted by a selected pile materials. It enables the user to get real time basis of printings and data storages in combination with PC.

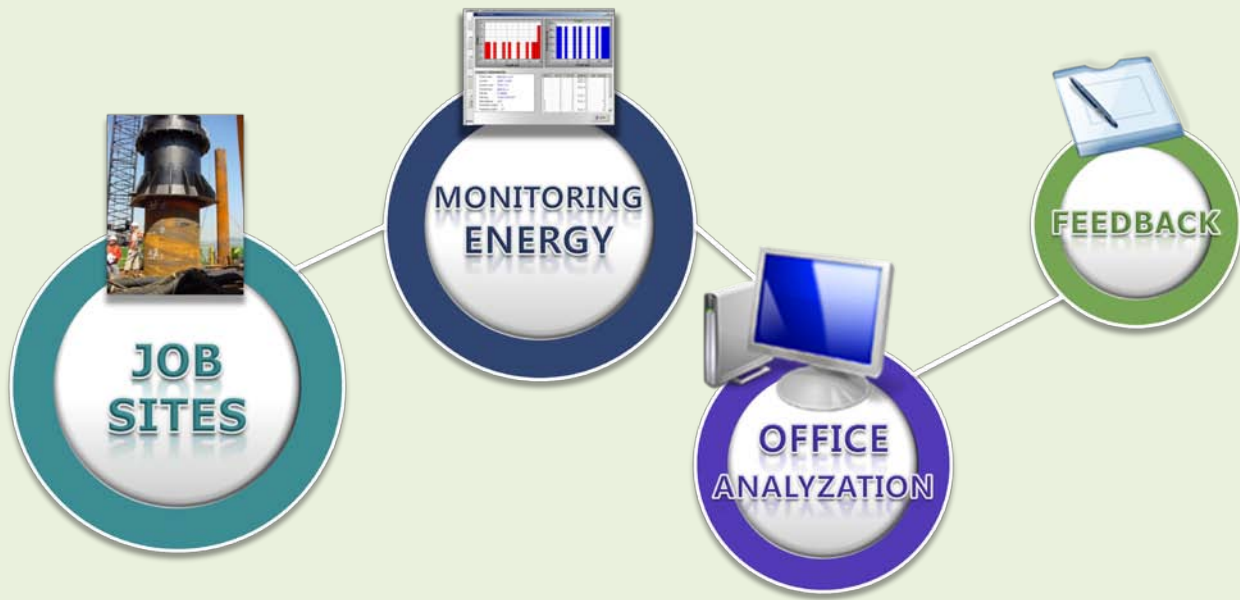


Appearance of IEA system

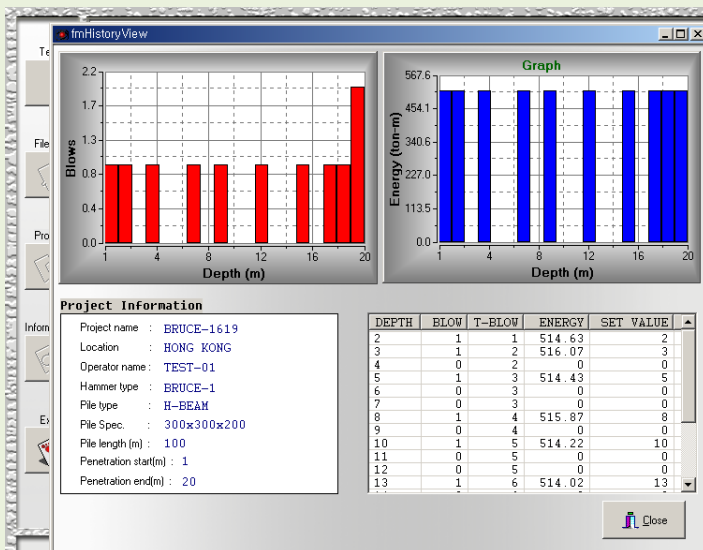
*SPECIFICATION AND FUNCTIONS

<< Model >>	IEA system
•Display	: Window touch screen
•Dimensions (W x D x H)	: 580 x 325 x 190mm
•Weights	: 12 kg
•Printer Paper	: Thermal Roll Paper 57.5 mm
•IEA Input Power	: DC 24V
<< Printer Specification >>	
•Model	: BTP 700
•No. of Columns	: 32(48) Columns / Line
•Printing Speed	: 50mm / Sec
•Paper Width	: 57.5mm
•Power	: DC 12~24V / 2.5A
•Data Buffer	: 8 Kbyte
•Current Consumption	: -5~50℃
•Dimension (W x D x H)	: 122 x 128 x 93mm

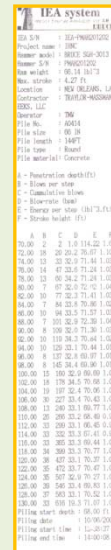
WHY IEA SYSTEM CAN BE BENEFITED?



- ♣ **Impact Energy Efficiency** and **Blow Rate** can be monitored by the operators.
- ♣ **Stroke Height** can be adjusted in accordance with a sufficient energy.
- ♣ Each **Penetration Depth** can be seen if a proper hitting energy is driven.
- ♣ Data registered into **IEA** can be printed to evaluate energy status for next time schedule.
- ♣ **IEA** system is an excellent managing way of both pile materials and equipments.
- ♣ **IEA** data from working sites can be seen and evaluate on PC at your office.



Energy Data Display



Job Data Printing Out